

THE WELLINGTON MARKETPLACE PLAT

0332-100

5

BEING A REPLAT OF A PORTION OF TRACT "A" SUGAR POND MANOR OF WELLINGTON, AS RECORDED IN PLAT BOOK 30, PAGES 20-32 INCLUSIVE, PUBLIC RECORDS PALM BEACH COUNTY, FLORIDA SECTION 8 AND 9, TOWNSHIP 44 SOUTH, RANGE 41 EAST, PALM BEACH COUNTY, FLORIDA
WELLINGTON PLANNED UNIT DEVELOPMENT

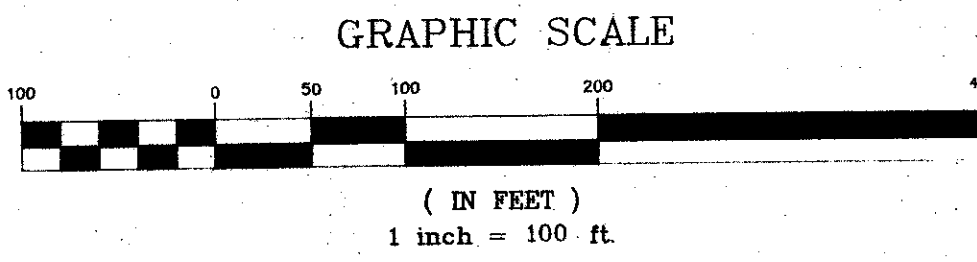
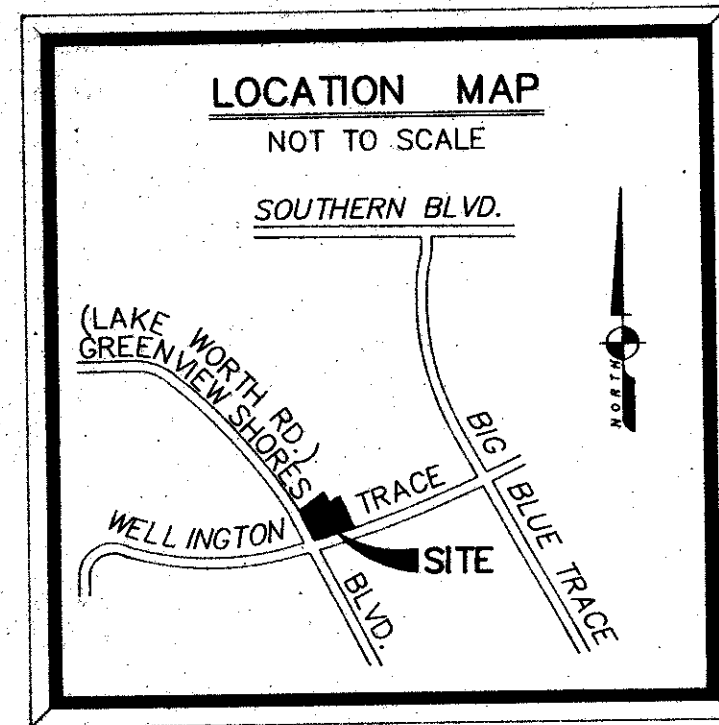
SHEET INDEX

1. COVER SHEET
2. PLAT BOUNDARY
3. EASEMENT DETAILS

STATE OF FLORIDA
COUNTY OF PALM BEACH

This plat was filed for record at _____ this _____ day of _____ 1992 and duly recorded in Plat Book _____ on pages _____ through _____

Milton T. Bauer
Clerk of Circuit Court
By: _____

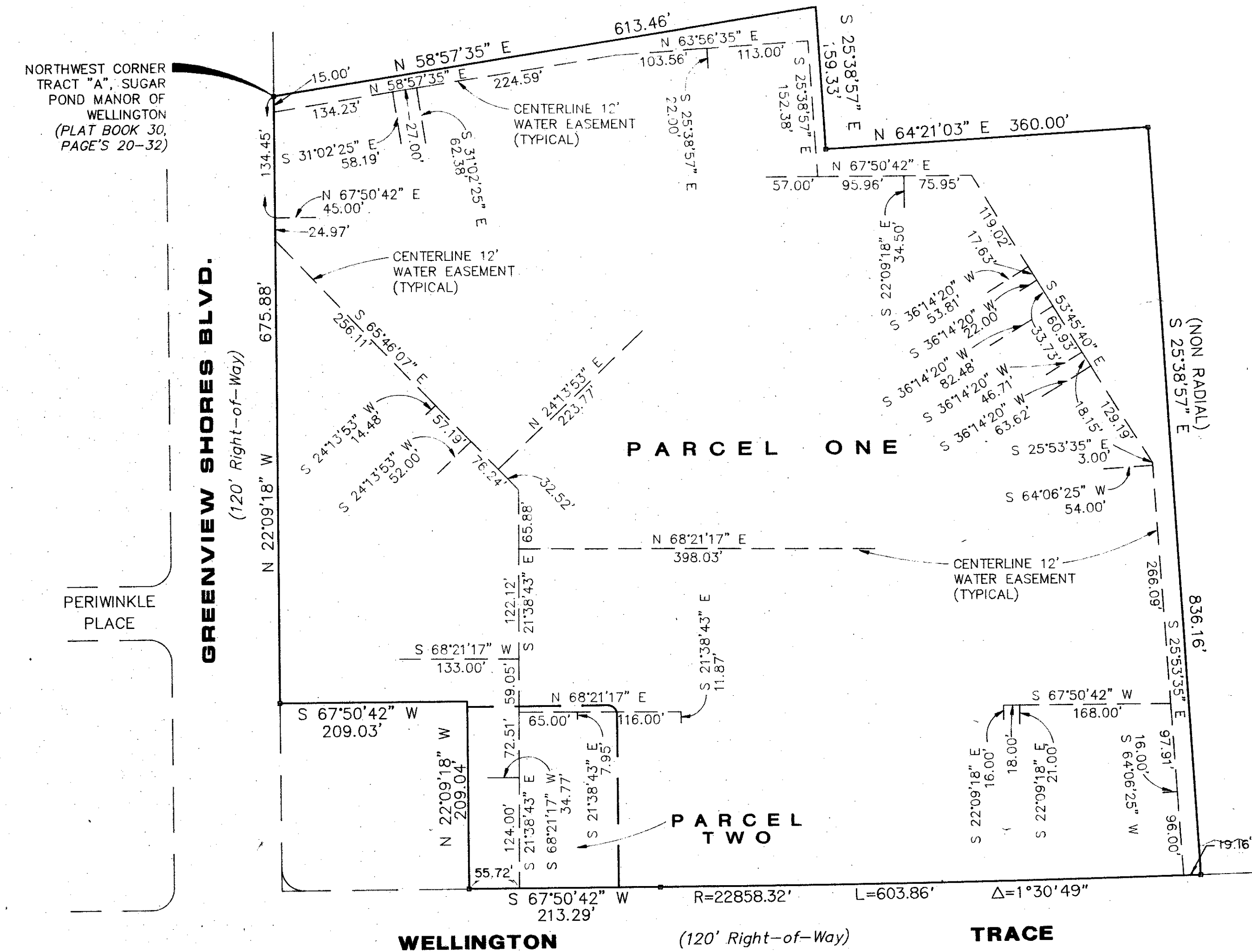
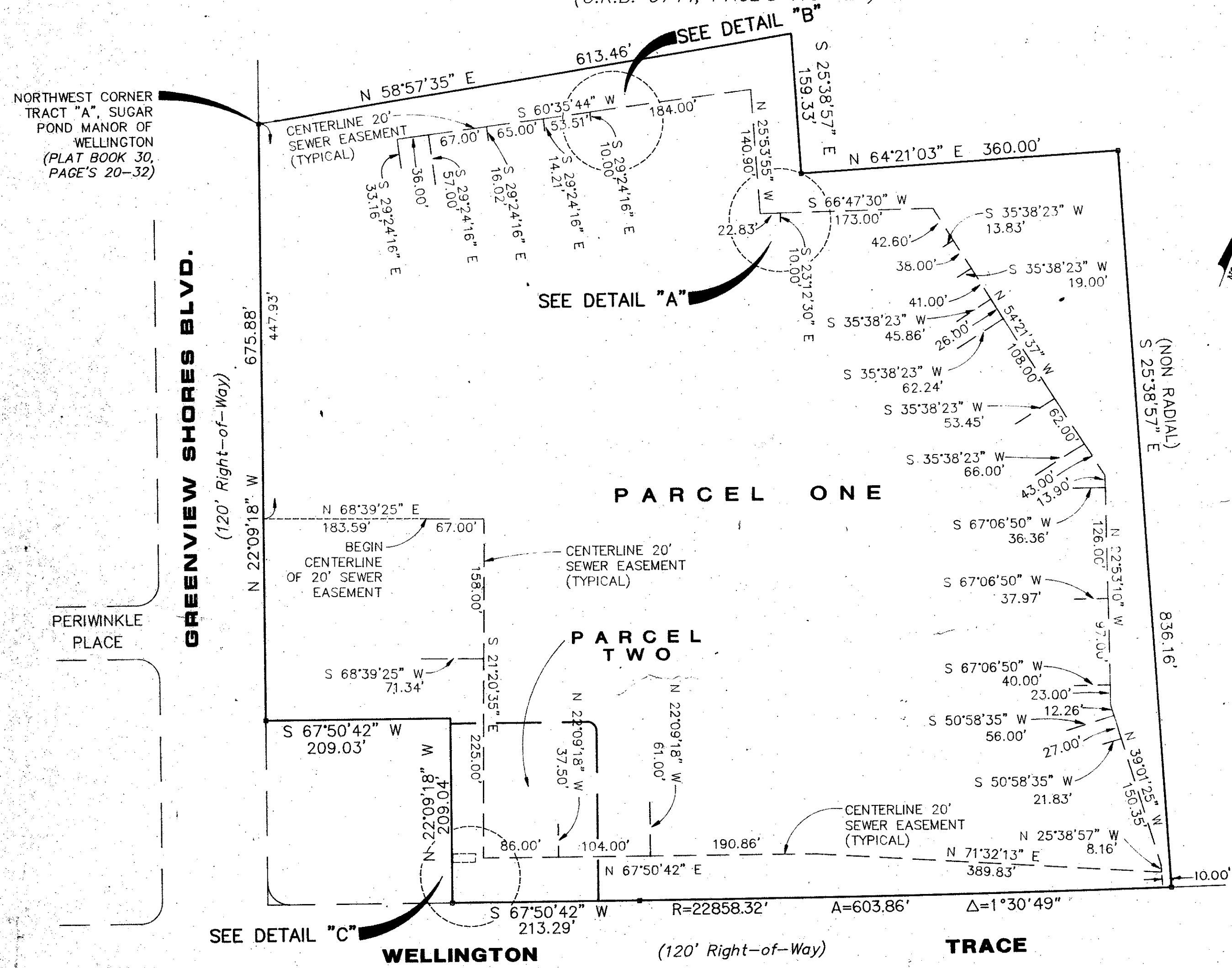


PREPARED BY
MICHAEL D. AVIROM, P.L.S.
AVIROM-HALL and ASSOCIATES, INC.
LAND SURVEYING / LAND DEVELOPMENT CONSULTANTS
50 S.W. 2nd AVENUE, SUITE 102
BOCA RATON, FLORIDA 33432
NOVEMBER, 1991

SHEET 3 of 3

DETAIL OF 20' SEWER EASEMENT
(O.R.B. 6744, PAGE'S 114-123)

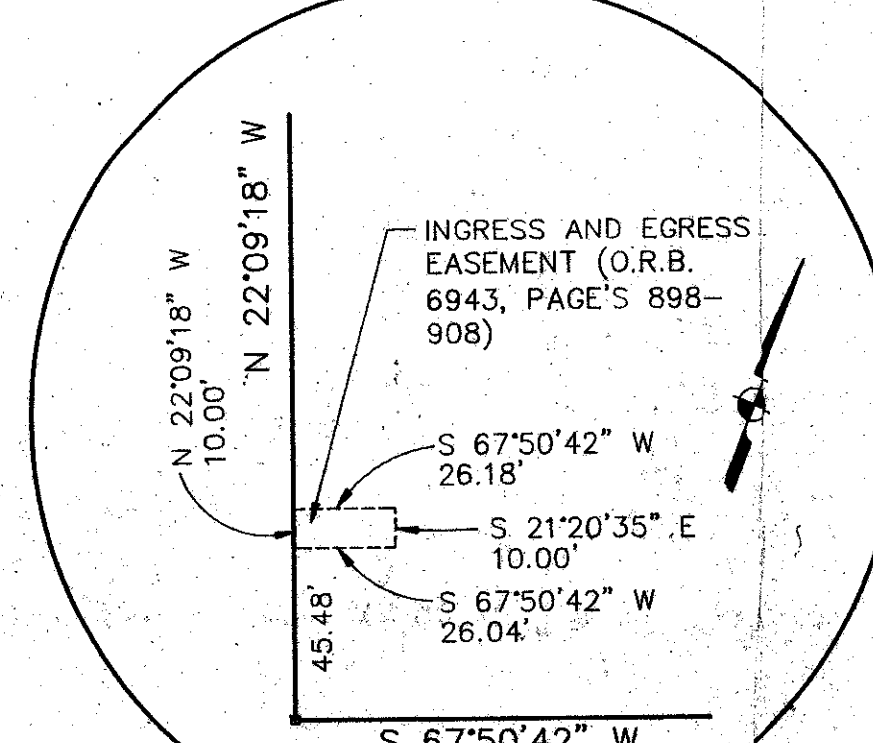
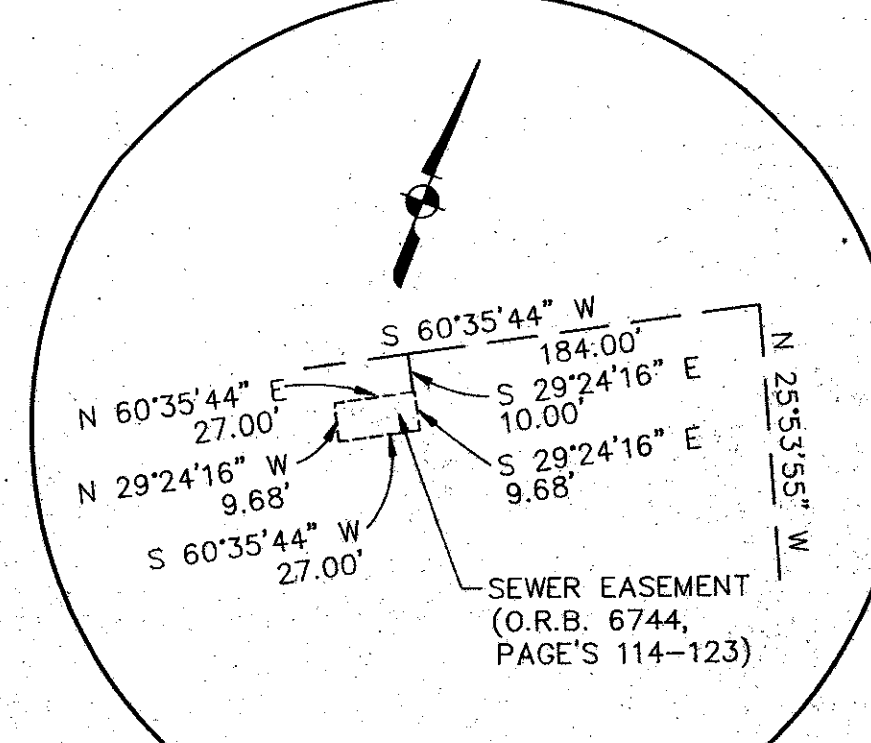
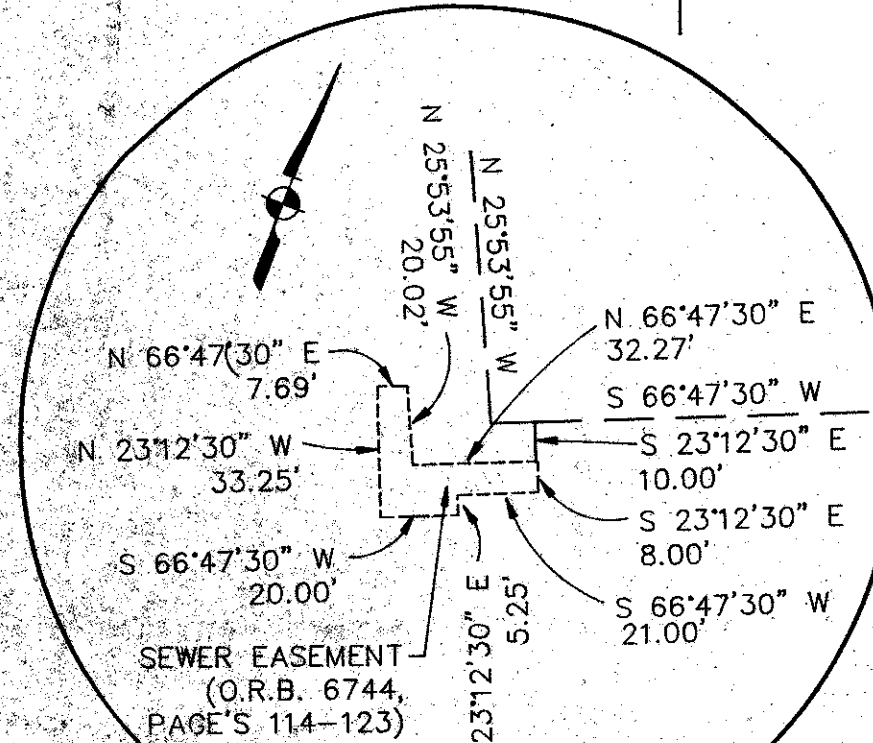
DETAIL OF 12' WATER EASEMENTS
(O.R.B. 6744, PAGE'S 124-134)



DETAIL "A" NOT TO SCALE

DETAIL "B" NOT TO SCALE

DETAIL "C" NOT TO SCALE



0332-100
PET. 86-32G
COLLECT

WELLINGTON MARKET PLACE 69/5

SUBDIVISION - THE WELLINGTON MARKETPLACE
 BOOK - LA PAGE 5
 FLOOD ZONE - F1-00 MAP # 100B
 QUAD - 77
 SE - 30E 83414
 PLAT NAME - Wellington, P.L.D.
 COUNTY - Palm Beach

TAZ 727